



**Westmoreland Street**

**£5,950,000**

Marylebone, London W1

SOMMERVILLE FLURY



# Westmoreland Street

Marylebone, London W1

An impressive five storey freehold townhouse ideally located in prime Marylebone.

The property comprises two large reception rooms, kitchen/dining room, family room/playroom, three double bedrooms, two bathrooms (one en-suite) and two guest cloakrooms. Further benefits include an integral double garage and a substantial west facing roof terrace.

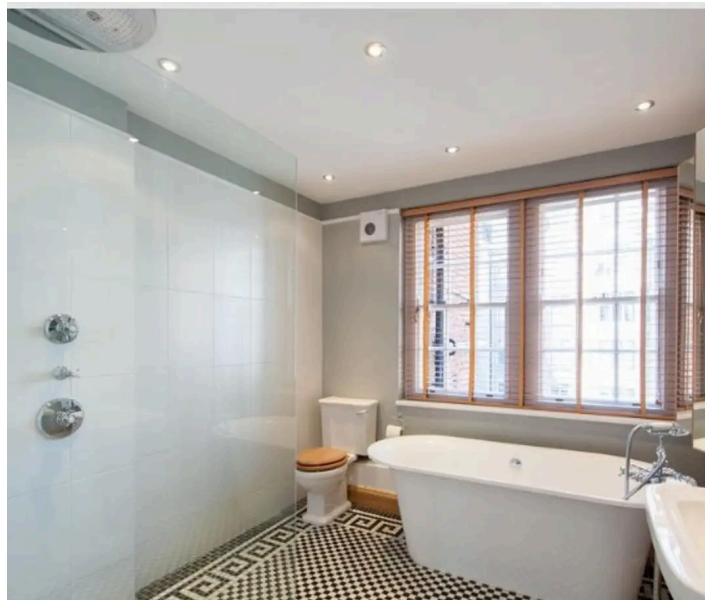
Westmoreland Street is superbly located within the heart of Marylebone Village, just moments from the fashionable boutiques, restaurants and bars on Marylebone High Street. The green open spaces of Regent's Park are within easy walking distance (0.5 miles).

Transport links are excellent at Bond Street (0.4 miles), Oxford Street (0.6 miles), Baker Street (0.6 miles) and Regent's Park (0.5 miles) underground stations. There is easy access to the West and Heathrow via the A40.

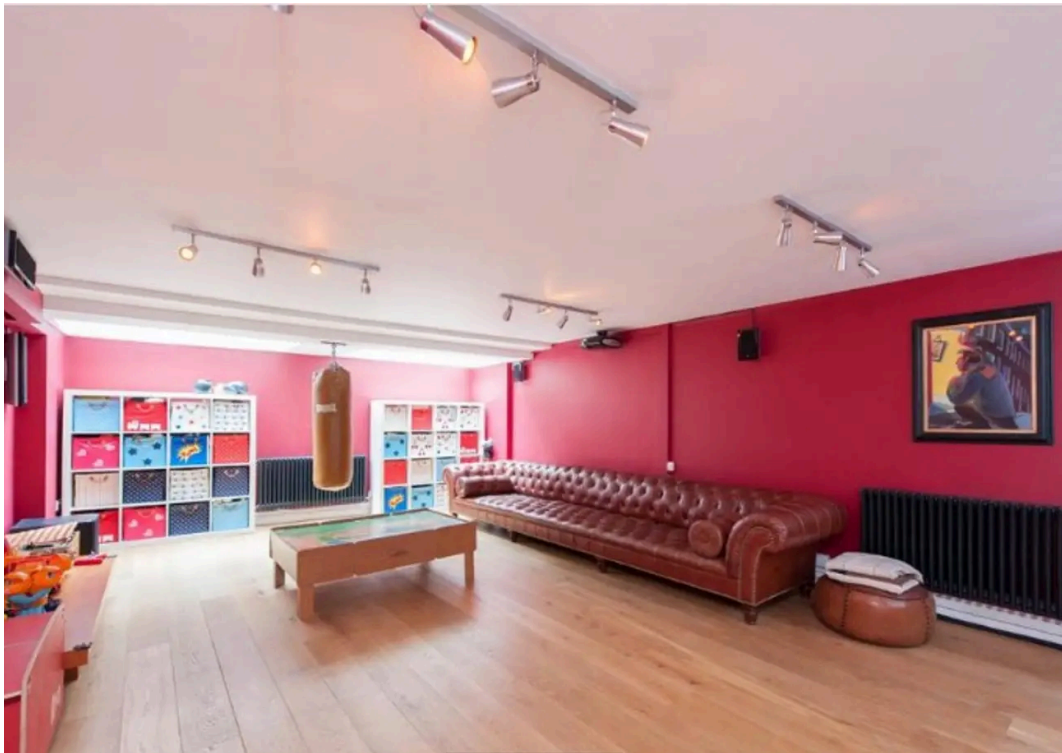
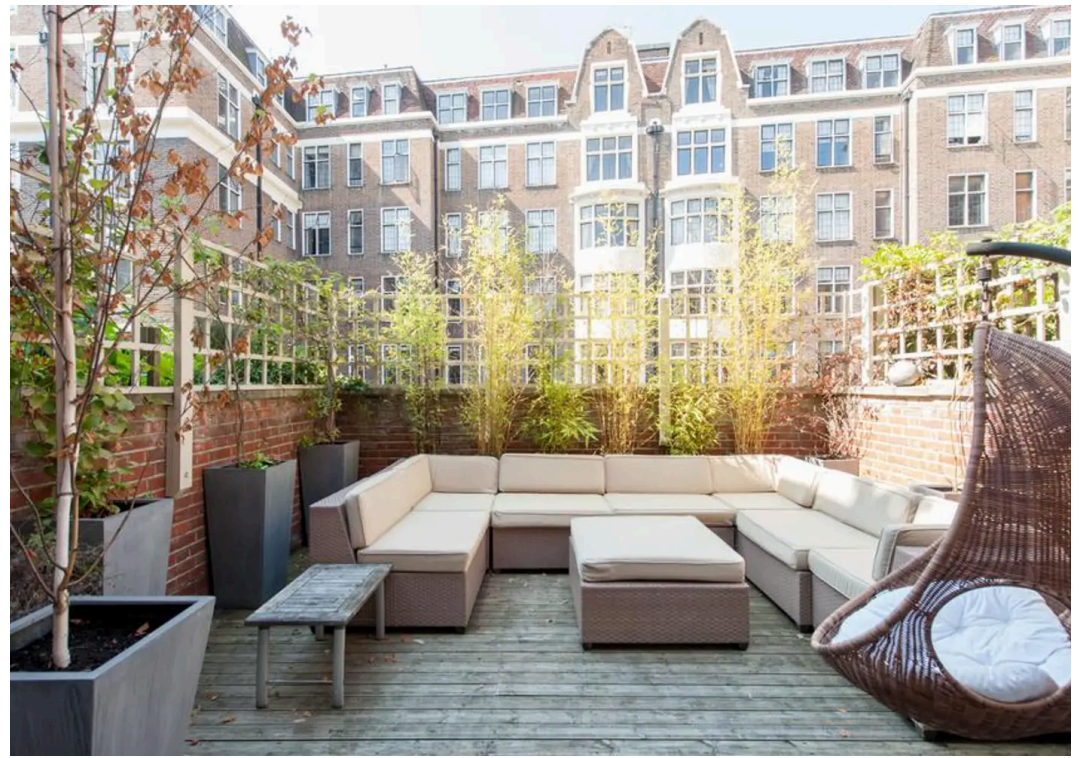
City of Westminster FREEHOLD

ECP Rating : E

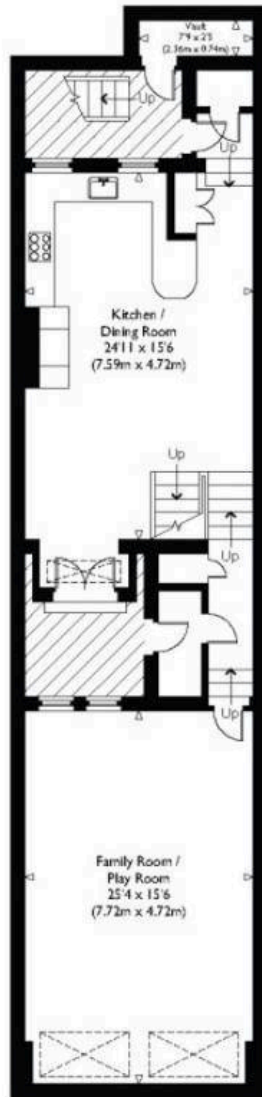
SOMMERVILLE FLURY



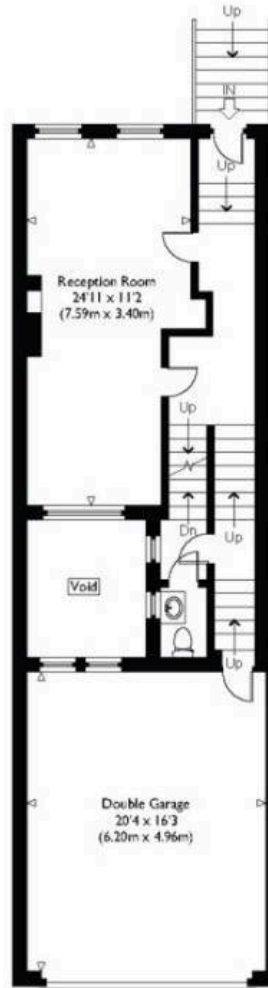




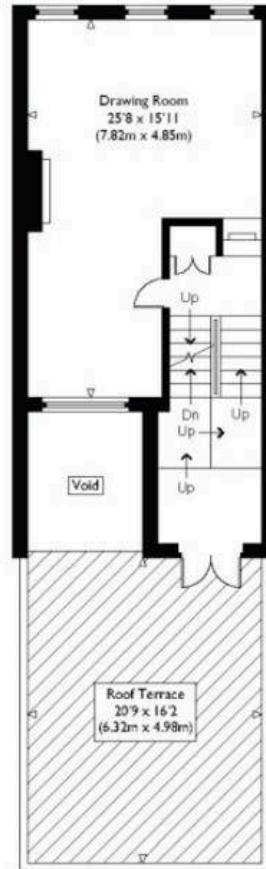
Approximate Gross Internal Floor Area : 3135 sq ft / 291.3 sq m (Including Vault)



Lower Ground Floor



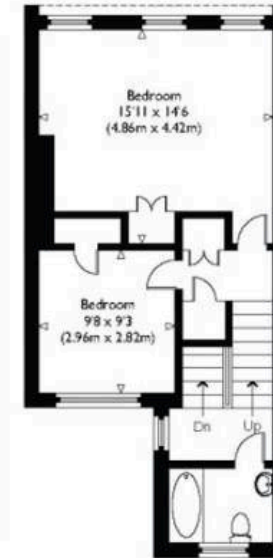
Ground Floor



First Floor



Second Floor



Third Floor



## SOMMERVILLE FLURY

---

+44(0)20 3479 5314

21 Ellis Street, Knightsbridge, London SW1X 9AL

[info@sommervilleflury.com](mailto:info@sommervilleflury.com)

[www.sommervilleflury.com](http://www.sommervilleflury.com)