



Tennyson Road, Queen's Park

London, NW6

£1,900,000

SOMMERVILLE FLURY

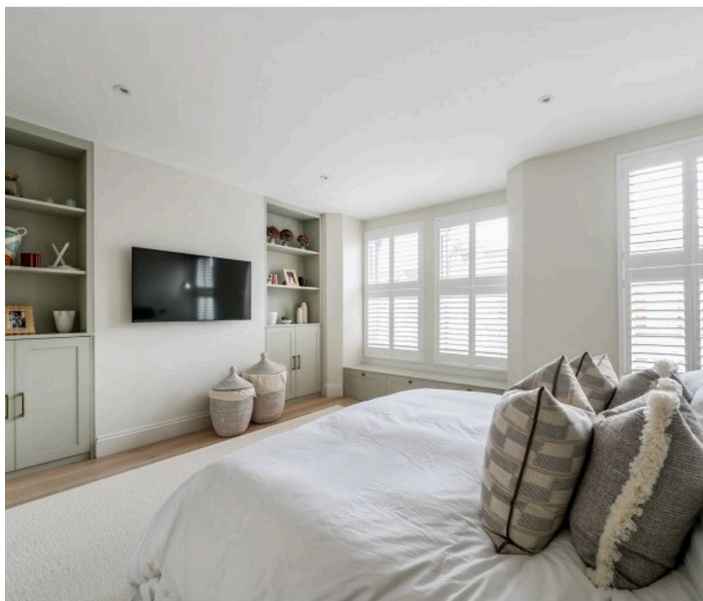
Tennyson Road, Queen's Park

London, NW6

This immaculate four-bedroom house in Tennyson Road has been beautifully restored to create a beautiful family home in the heart of Queen's Park.

On entering the house on the ground level, there is a fabulous double reception room with wood parquet flooring, feature fireplace, sash windows and cornicing. At the rear, is a stunning, contemporary kitchen fitted to a superb specification, boasting exposed wooden beams, an enormous glass sky light, and concrete floor with underfloor heating. Accessed via large sliding glass doors from the kitchen is a 21ft rear garden with slatted fencing.

The upper floors offer four bedrooms, one bathroom and two shower rooms, channelling a similar interior aesthetic to the ground floor, using muted tones to create a serene environment. The principal bedroom is situated on the first floor at the front of the house and offers a large bay window, dressing room and an ensuite shower room. There is also a further double bedroom and family bathroom. The Second Floor comprises a loft room which is currently being used as an office, an en-suite shower room, eaves storage and a fourth bedroom.



Tennyson Road, Queen's Park

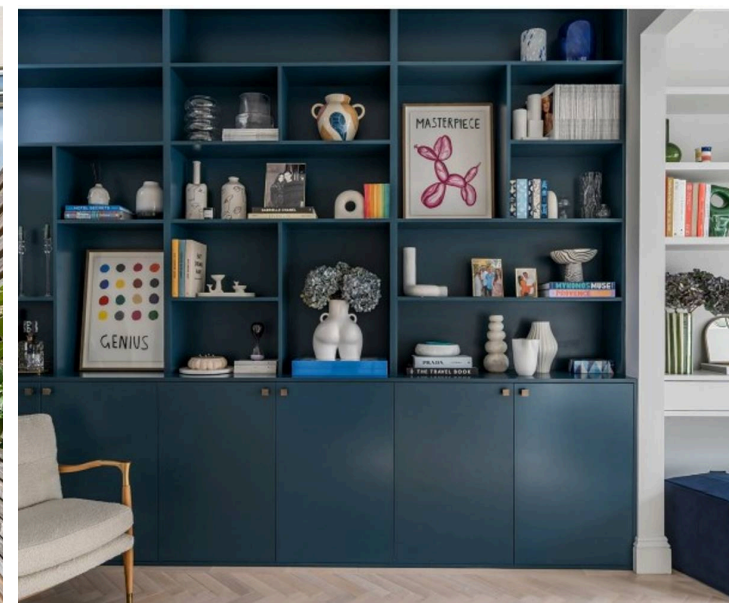
London, NW6

Location:

Tennyson Road is a fantastic residential street within walking distance of shops and amenities both on Lonsdale Road & Salusbury Road, in addition to Queen's Park itself and its fabulous weekly farmer's market. The green spaces of Paddington Old Cemetery is situated just behind the property. Transport links include Brondesbury Park (Overground Station), Queen's Park (Bakerloo Line) and Kilburn (Jubilee Line). Access to Brent Cross Shopping Centre, Westfield Shopping Centre and the West End are within easy reach.

Council Tax band: E

Tenure: Freehold



SOMMERVILLE FLURY

Tennyson Road, London, NW6

Approximate Area = 1736 sq ft / 161.2 sq m

Limited Use Area(s) = 90 sq ft / 8.3 sq m

Total = 1826 sq ft / 169.5 sq m

For identification only - Not to scale



SOMMERVILLE FLURY

+44(0)20 3479 5314

21 Ellis Street, Knightsbridge, London SW1X 9AL

info@sommervilleflury.com

www.sommervilleflury.com