



Saltram Crescent, London
W9

Guide Price **£575,000**

SOMMERVILLE FLURY

Saltram Crescent, London, W9

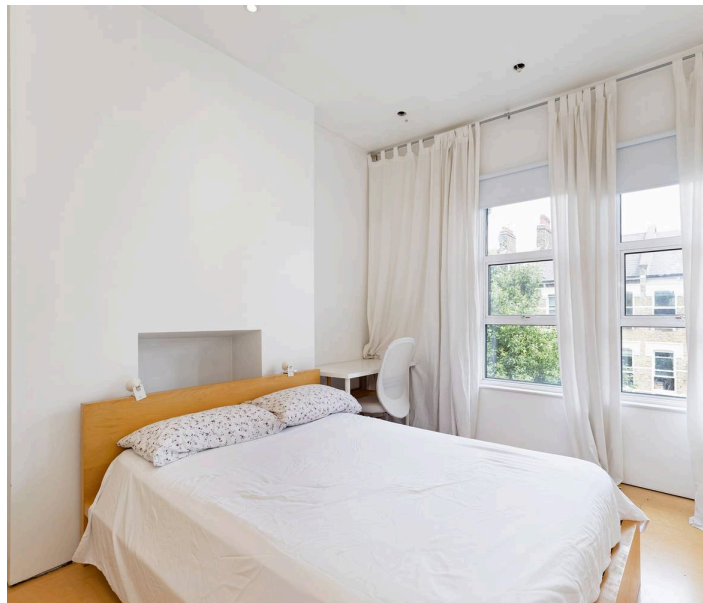
Description:

A fabulous apartment on the top floor of a well maintained white stucco fronted period building. Saltram Crescent is a tranquil, sought after road in Maida Vale.

This spacious two-bedroom, one-bathroom apartment blends contemporary design with Victorian charm. The architectural modernist design combined with great ceiling heights and over sized doors throughout gives the apartment a feeling of light and space.

Separate well equipped eat-in kitchen is to the rear of the building. The primary bedroom features high ceilings, large windows and floor to ceiling custom made wardrobes. There is a further bedroom with ample storage.

The property benefits from underfloor heating (gas/water) and the lease includes the demise of the loft space which, subject to planning, presents the opportunity to extend into habitable accommodation.



Saltram Crescent, London W9

Location:

Saltram Crescent is a quiet, sought after residential street ideally located in Maida Vale, with close proximity to Queen's Park and Notting Hill. The green open spaces of Queen's Park and Paddington Recreation Ground are close by, as are the idyllic towpaths of the Grand Union Canal.

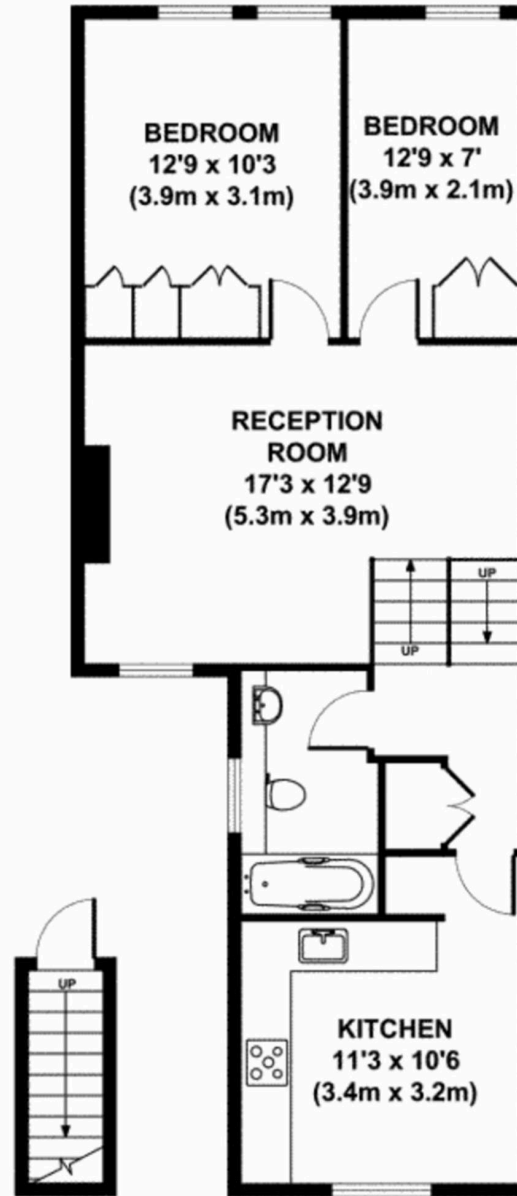
Excellent transport links include Queen's Park (0.4 miles - Bakerloo line, Overground), Westbourne Park (0.6 miles - Hammersmith & City, Circle lines), and Paddington Station (1.3 miles - Elizabeth and Bakerloo lines, National Rail, Heathrow Express).

Share of Freehold.

City of Westminster.

Council Tax band: C





FIRST FLOOR

SECOND FLOOR
GROSS INTERNAL
FLOOR AREA 680 SQ FT

APPROX. GROSS INTERNAL FLOOR AREA 680 SQ FT / 63 SQ M

ILLUSTRATION FOR IDENTIFICATION PURPOSES ONLY - NOT TO SCALE

SOMMERVILLE FLURY

SOMMERVILLE FLURY LIMITED

21 Ellis Street, London SW1X 9AL

T: +44(0)20 3479 5314

E: info@sommervilleflury.com