



Flat 25, 23 Faraday Road, London

London

Guide Price **£675,000**

SOMMERVILLE FLURY

Flat 25

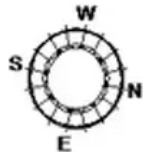
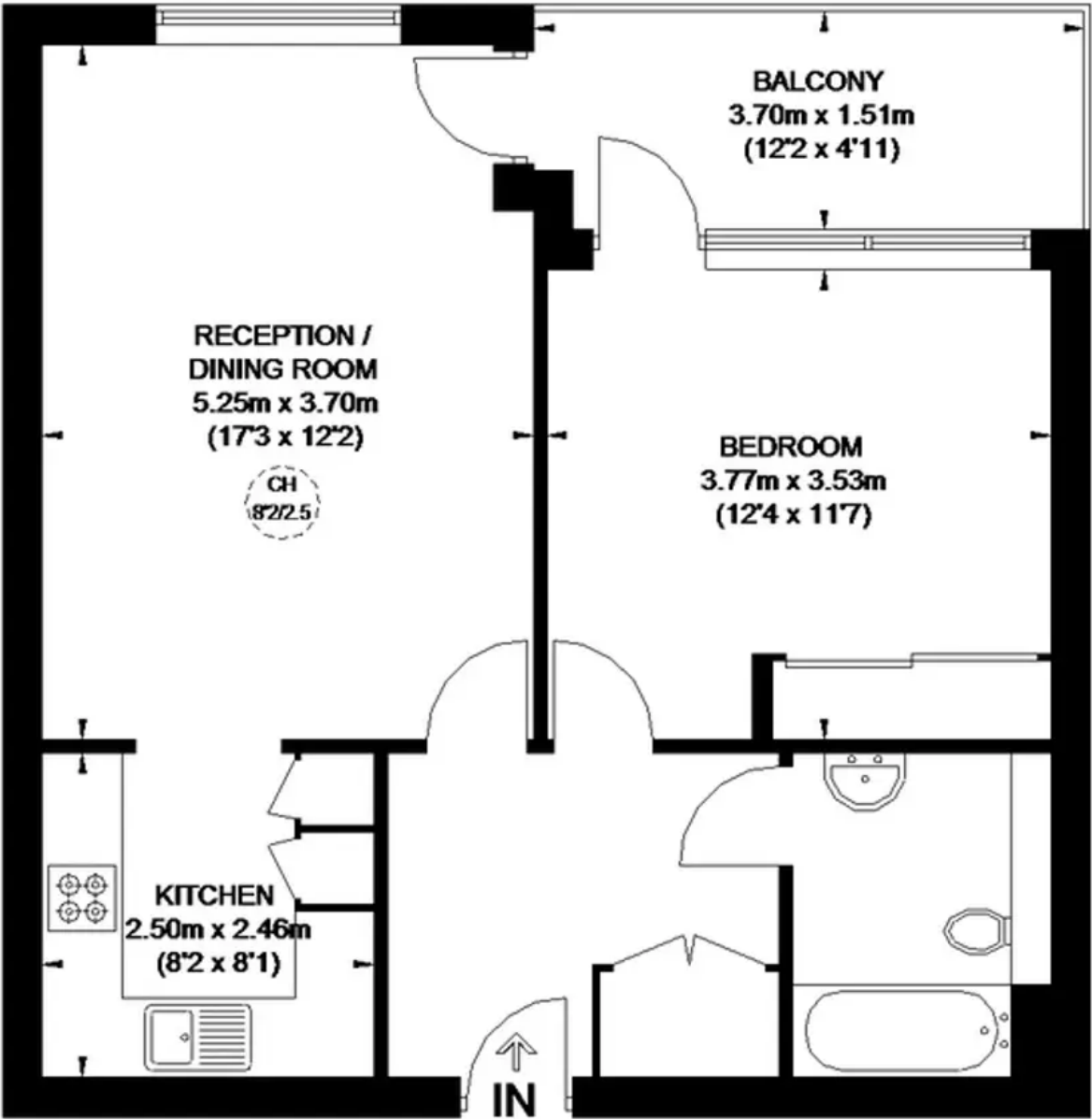
23 Faraday Road, London

A superb fifth floor one bedroom apartment with an open plan kitchen/reception room that opens onto a substantial decked balcony offering west facing London skyline and park views. The flat is within the highly desirable Portobello Square development and has an off-street parking space. Portobello Square is becoming one of the area's most desirable addresses with many boutiques, cafés and restaurants on its doorstep and excellent connections to the rest of London and beyond. The development is tucked away behind the fashionable Golborne Road and next to the world-famous Portobello Road. Transport links are at both Ladbroke Grove (0.4 miles) and Westbourne Park (0.6 miles) tube stations for Hammersmith & City and Circle lines. Royal Borough of Kensington & Chelsea Leasehold (989 years remaining)
Tenure: Leasehold





FARADAY ROAD



APPROXIMATE GROSS INTERNAL AREA
FIFTH FLOOR
567 SQ. FT. (52.7 SQ. M.)



FIFTH FLOOR

SOMMERVILLE FLURY

You can include any text here. The text can be modified upon generating your brochure.