



Ladbroke Road, Notting Hill Gate

London, W11

Guide Price £1,050,000

SOMMERVILLE FLURY

Ladbroke Road, Notting Hill Gate



This split level 2 bedroom property is located just moments from Notting Hill tube station and the popular Portobello Road.

The property comprises a lovely and bright open plan reception / kitchen, Juliet style balcony, two double bedrooms both with en suite with modern bathrooms and plenty of storage.

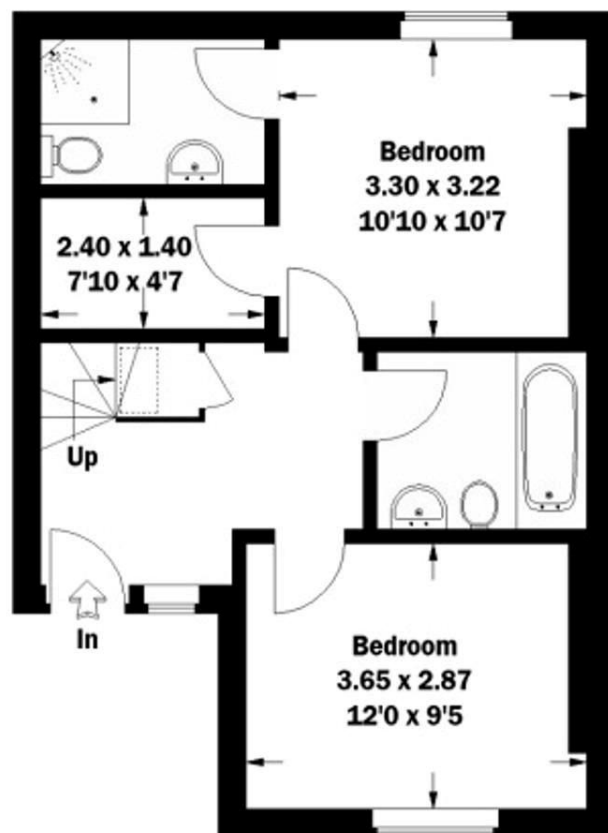
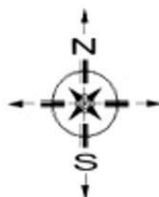
Ladbroke Road is at the centre of Notting Hill moments from Notting Hill Gate Tube station and bus routes. The flat is conveniently located for Starbucks, Pret a Manger, numerous banking facilities, Marks & Spencer's, Boots and local independent shops. The property is a short walk to Kensington Palace Gardens & Hyde Park.

Tenure: Leasehold

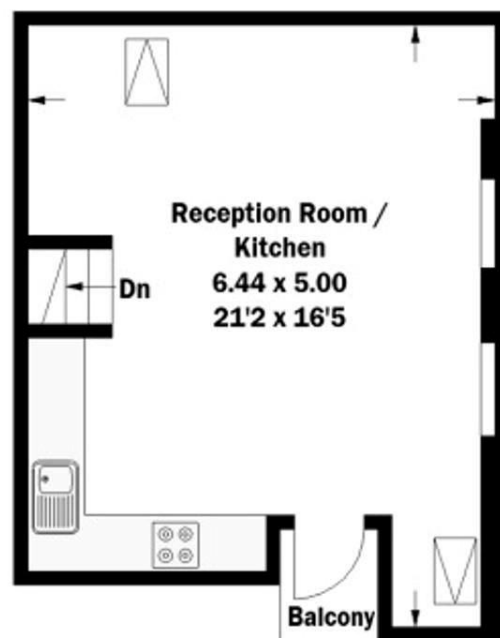



Ladbroke Road, W11

Approximate Gross Internal Area = 72.3 sq m / 778 sq ft



Third Floor



 = Reduced headroom below 1.5 m / 5'0"

Fourth Floor

Whilst every attempt has been made to ensure the accuracy of the floor plan, measurements are approximate and not to scale.
No guarantee is given on the total square footage of the property quoted on the plan. Figures given are for guidance.
Plan is for illustration purposes only, not to be used for valuations.

SOMMERVILLE FLURY

SOMMERVILLE FLURY

21 Ellis Street,

Knightsbridge

London

SW1X 9AL

O.+ 44(0)20 3479 5314

e.info@sommervilleflury.com