



Kensington Gardens Square, London

Guide Price £2,300,000

W2

SOMMERVILLE FLURY

## 22 Kensington Gardens Square, London

An elegant two bedroom apartment laterally occupying the entire second floor of an impressive period building on sought-after Kensington Gardens Square. Meticulously refurbished to the highest specification. Many original features such as ceiling roses, cornicing and fireplaces have been carefully restored or replicated where necessary, ensuring that the apartment maintains its period charm.

The property is equipped with the finest contemporary fixtures and fittings, including a bespoke Roundhouse kitchen with Miele appliances, luxuriously designed bathrooms, underfloor heating, oak herringbone floors and RAKO mood lighting; all of which guarantee unsurpassable comfort.

Kensington Gardens Square is ideally positioned, close to the popular shopping destinations of Westbourne Grove and Ledbury Road. Nestled between Hyde Park and Notting Hill, the property will undoubtedly benefit from the regeneration around Whiteleys, which will make Queensway and Bayswater one of the most desirable areas in Prime Central London.

It is served by excellent transport links and is within close proximity of Notting Hill (Central, District & Circle Lines), Bayswater (District & Circle) and Queensway (Central Line) tube stations.

Local Authority: City of Westminster Share of Freehold.

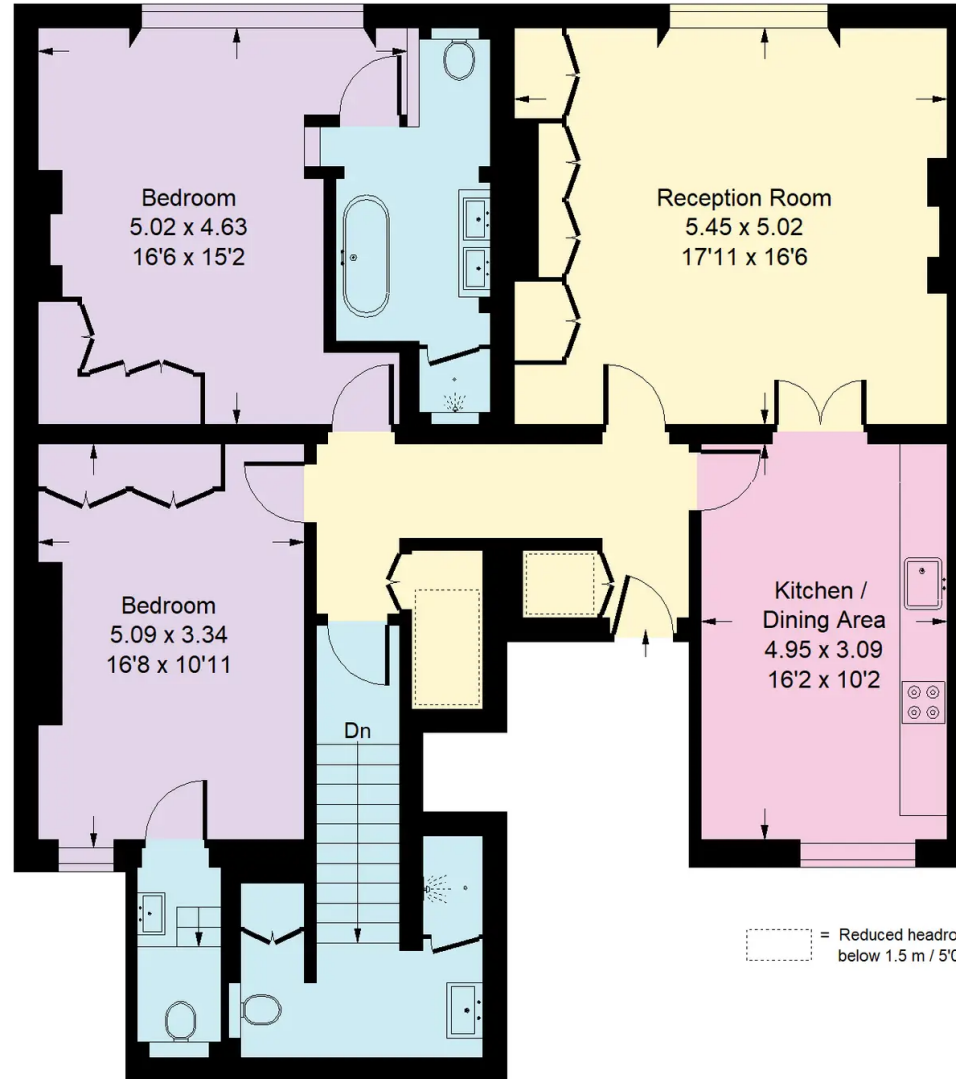
SOMMERVILLE FLURY





# Kensington Gardens Square, W2

Approx. Gross Internal Area  
120.3 sq m / 1295 sq ft



## Second Floor

## SOMMERVILLE FLURY

---

You can include any text here. The text can be modified upon generating your brochure.