



Kensington Gardens Square, London, W2
£2,350,000

SOMMERVILLE FLURY

Property Description

An impressive three bedroom duplex apartment on the top two floors of this Grade II listed, white stucco fronted building which has been meticulously refurbished to the highest specification. The property overlooks, and has access to, a beautiful and tranquil private garden.

The property is equipped with the finest contemporary fixtures and fittings, including a bespoke Roundhouse kitchen with Miele appliances, luxuriously designed bathrooms, underfloor heating, oak herringbone floors, comfort cooling in the reception room and master bedroom, and RAKO mood lighting; all of which guarantee unsurpassable comfort.

Kensington Gardens Square is ideally positioned, close to the popular shopping destinations of Westbourne Grove and Ledbury Road. Nestled between Hyde Park and Notting Hill, the property will undoubtedly benefit from the regeneration around Whiteleys, which will make Queensway and Bayswater one of the most desirable areas in Prime Central London.

It is served by excellent transport links and is within close proximity of Notting Hill (Central, District & Circle Lines), Bayswater (District & Circle) and Queensway (Central Line) tube stations.

Local Authority: City of Westminster Share of Freehold.

EPC Rating: C



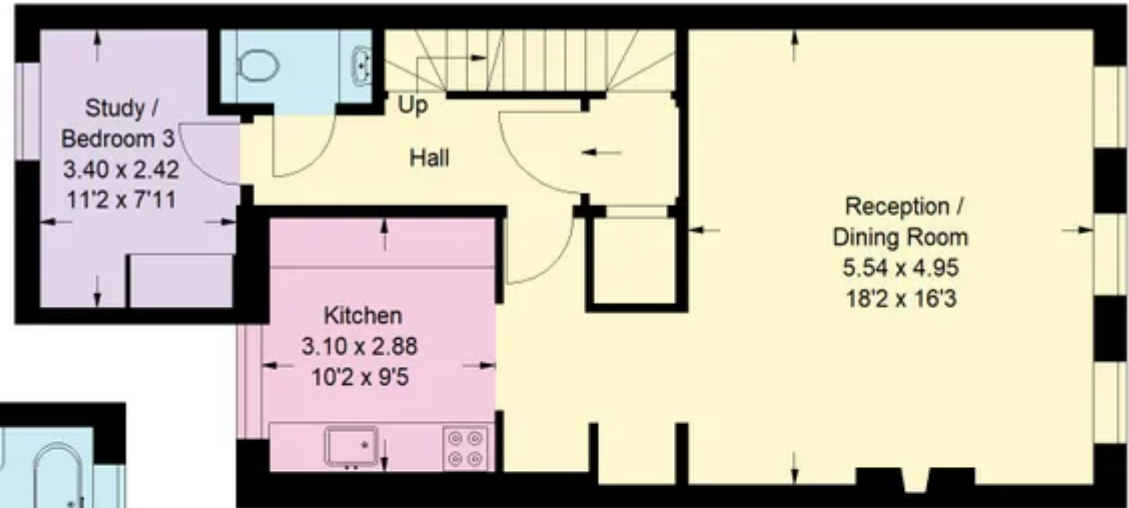




All

Kensington Gardens Square, W2

Approx. Gross Internal Area
113 sq m / 1216 sq ft



Third Floor



Fourth Floor

Whilst every attempt has been made to ensure the accuracy of the floor plan, measurements are approximate and not to scale.
No guarantee is given on the total square footage of the property quoted on the plan. Figures given are for guidance.
Plan is for illustration purposes only, not to be used for valuations.

Sommerville Flury

+44(0)20 3205 7260

info@sommervilleflury.com

SOMMERVILLE FLURY