



Heber Road, London, NW2

£1,595,000

Freehold

SOMMERVILLE FLURY

Heber Road. London NW2

An elegant and spacious freehold semi-detached Edwardian house in a quiet, leafy road in Willesden Green. This immaculate family home, which has been modernised throughout, offers over 2000 sq ft of living space. In addition there is a large loft which can be extended (subject to planning) to create a further bedroom and bathroom.

On the ground floor there is a wonderful reception room with bay window to the front. The house has been extended to the rear and includes a modern kitchen, spacious reception room, bright separate dining area, utility room and guest WC.

The accommodation on the first floor comprises three bedrooms and two bathrooms (one en-suite). The master bedroom has a walk-in wardrobe. All rooms are bright and well-proportioned.

The property further boasts a beautiful mature garden to the rear, accessed both via patio doors from the conservatory-style rear dining room and side door from the kitchen. There is also side access to the garden from the front of the house.

This is a fabulous family home with many attractive features such as wood flooring, high ceilings and cornicing, and underfloor heating. There is ample storage throughout.



Heber Road, London NW2

Location:

Heber Road is a quiet, tree-lined residential street with excellent transport links to Central London and the City. The nearest train stations are Willesden Green (Jubilee Line), Brondesbury (London Overground) and Cricklewood (Thameslink). The area is also served by numerous bus routes.

Major road arteries out of London are also close: M1 (1.7 miles), A406 North Circular (1.6 miles) and A40 (4 miles).

There is an excellent variety of local shops at Willesden Green and Cricklewood Broadway, both within walking distance, and large supermarkets a short drive away at Brent Cross and The Hyde, Hendon.

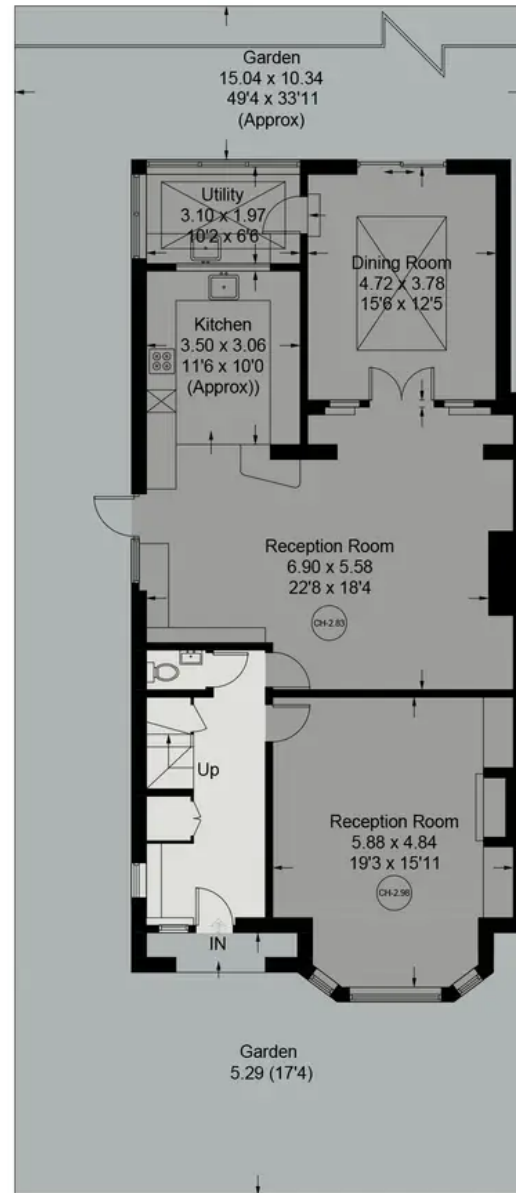
London Borough of Brent.



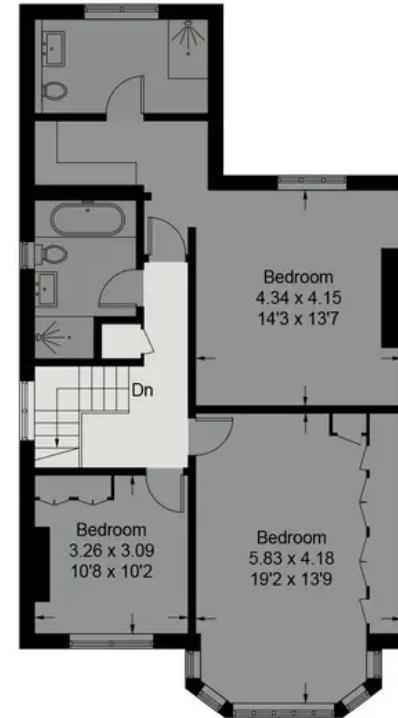
Heber Road



Approximate Gross Internal Area = 197.2 sq m / 2,123 sq ft



Ground Floor



First Floor

Illustration for identification purposes only, measurements are approximate, not to scale. floorplansUsketch.com © (ID1048928)

SOMMERVILLE FLURY

+44(0)20 3205 7260

info@sommervilleflury.com

Devonshire House, One Mayfair Place, London W1J 8AJ

www.sommervilleflury.com