



Greenwood Road, London Fields
London, E8

£4,250 pcm

SOMMERVILLE FLURY

Greenwood Road, London Fields

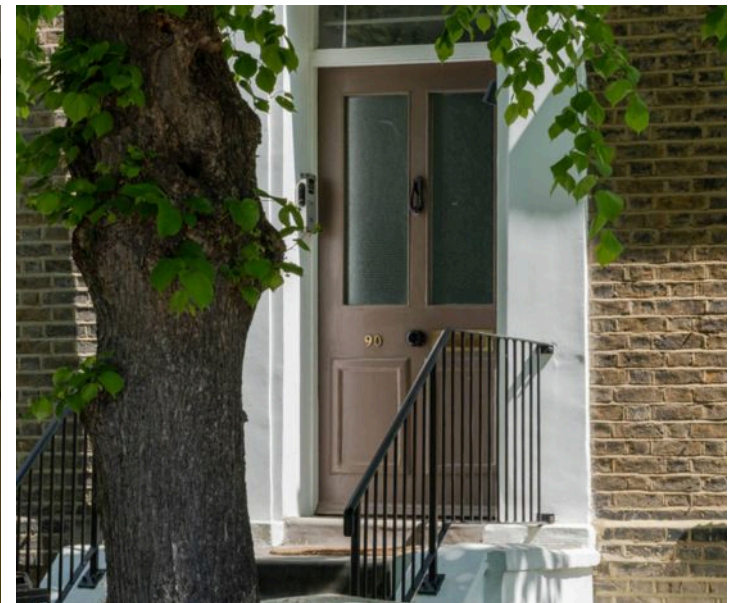
Description:

A stunning apartment arranged on the first and second floors of a sought-after Victorian terrace in the heart of London Fields.

On entering the apartment, there are stairs leading to a landing. To the front is an open-plan kitchen, reception and dining area. On one side of the room is a bespoke kitchen by Huxtable Joinery composed of olive-green cabinetry with Belgium blue limestone worktops and brass DeVol fixtures. There is a four-ring induction hob, an integrated oven and microwave oven, a fridge/freezer and a dishwasher; all appliances are by Smeg. There are two large sash windows, wooden floorboards and a limestone fireplace surround.

Additionally, on the first floor is a large bathroom with a contemporary, free-standing bathtub, a separate walk-in shower and a wide Burlington washstand. There is a sash window, dark wood-stained floorboards and built-in cupboards which houses the gas boiler, washing machine and tumble dryer.

From the landing, the staircase winds past another sash window to the second floor, where there are two double bedrooms. The primary is at the front of the property with fantastic storage and white painted wooden floorboards.



Greenwood Road, London Fields

Description Cont.

The second bedroom is next door. There is an original fireplace, sash window and white painted wooden floorboards.

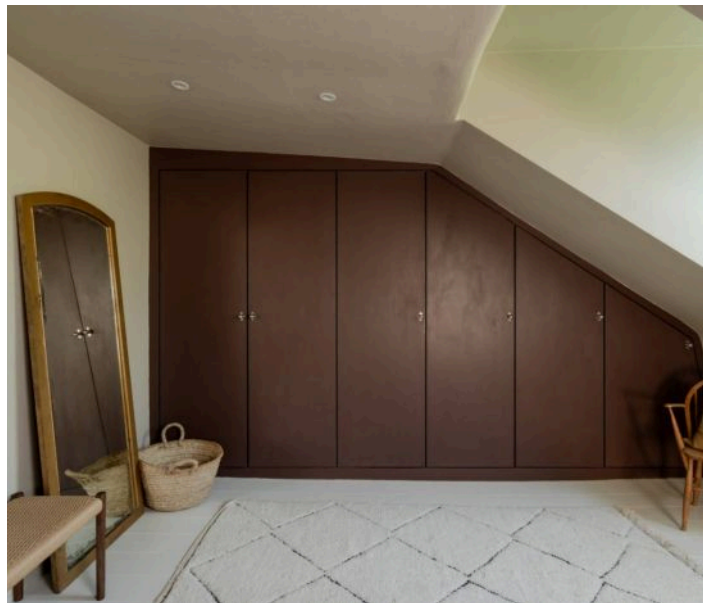
There is also a generous attic, which provides further storage.

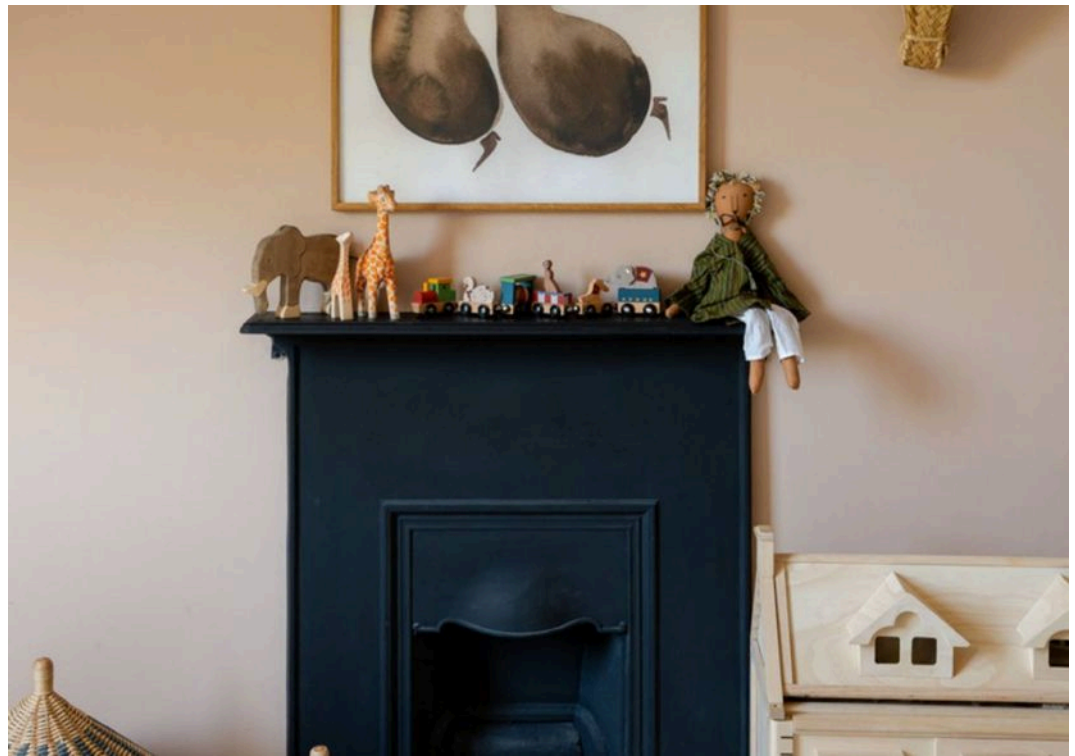
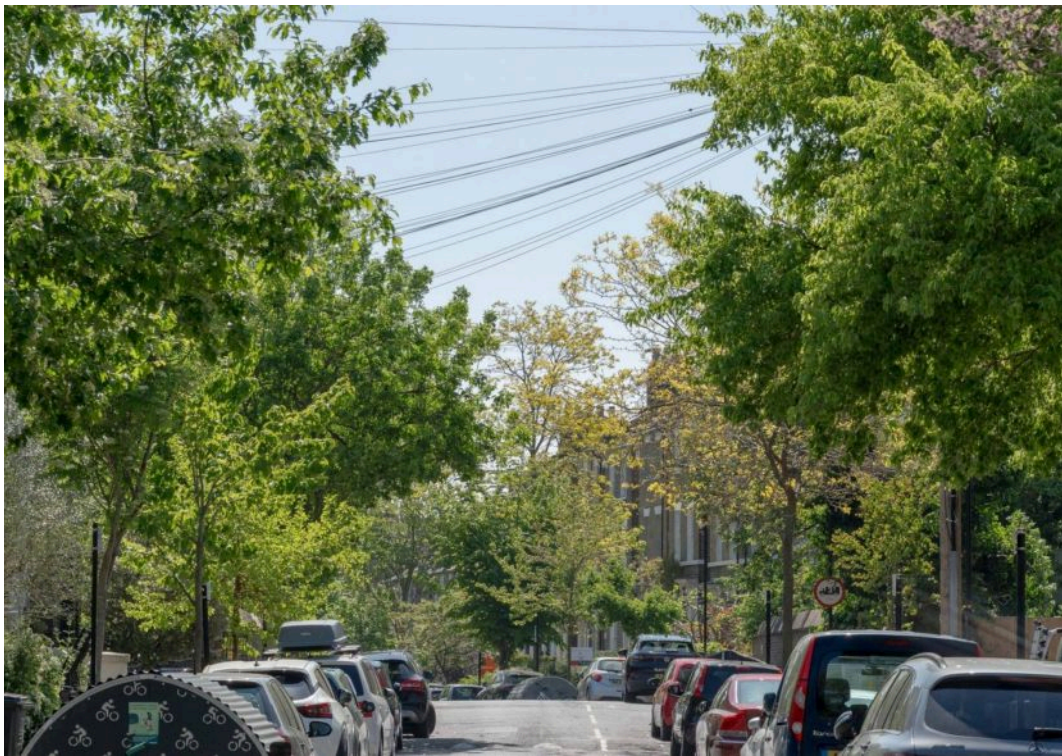
The apartment is located on Greenwood Road, moments from the vibrant Wilton Way and a short walk to Broadway Market and the open green spaces of London Fields.

There are many fantastic cafés and restaurants locally. Just a few minutes away are [The Spurstowe](#) (one of London's best-loved pubs), [Wilton Way Deli & Wines](#), [Violet bakery](#) and [Binch](#). Also close at hand are [Pophams](#) and [Lardo](#) on Richmond Road, [Little Duck The Picklery](#) and [Angelina](#) on Dalston Lane, [Elliot's](#) on Mare Street.

The apartment is currently also within the catchment area for Gayhurst School.

Dalston Junction and Kingsland stations are both a short walk away, providing transport links on the east/west and south-bound branches of the London Overground. Nearby Hackney Downs station provides links to Liverpool Street in less than 10 minutes. Buses run regularly to London Bridge and the City from nearby Kingsland Road.

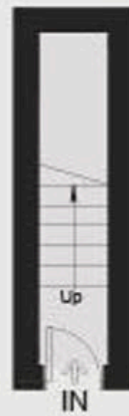




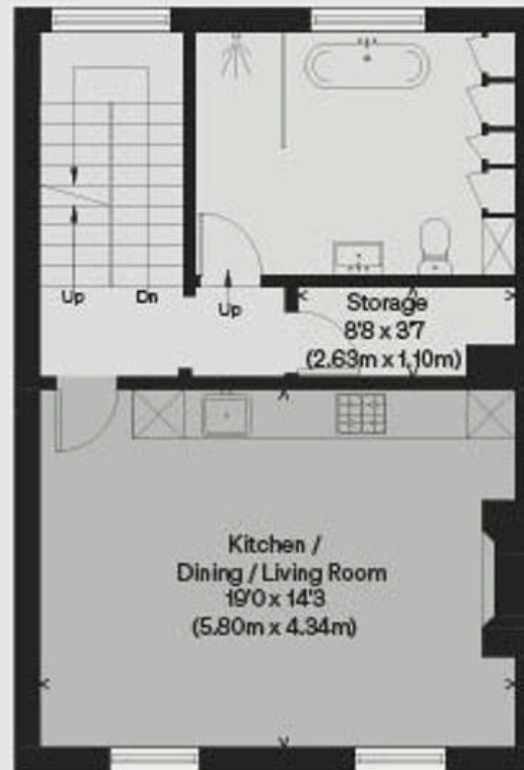
PROPERTY NAME
Greenwood Road

LOCATION
London E8

Approximate Floor Area = 100.0 sq m / 1076 sq ft



GROUND FLOOR



FIRST FLOOR



SECOND FLOOR

*Illustration for identification purposes only.
measurements are approximate, not to scale*

SOMMERVILLE FLURY

21 Ellis Street, London SW1X 9AL

+44 (0) 3479 5314

info@sommervilleflury.com

www.sommervilleflury.com