



**Penthouse, 23 Faraday Road, London, W10**

Guide Price **£1,175,000**

SOMMERVILLE FLURY

## Faraday Road, London, W10

**Asking Price £1,175,000**

A superb three bedroom two bathroom penthouse apartment with a lovely wrap around terrace accessed from all rooms and offers panoramic views. The open plan kitchen/reception room which is an exceptional size with ample space for a separate seating and dining area. The master bedroom is a generous size with built-in wardrobes and an en-suite shower room. Two of the bedrooms open on to the terrace along. The property is in the highly desirable Portobello Square development. The building benefits from secure underground parking space equipped with EV charging and bicycle storage.

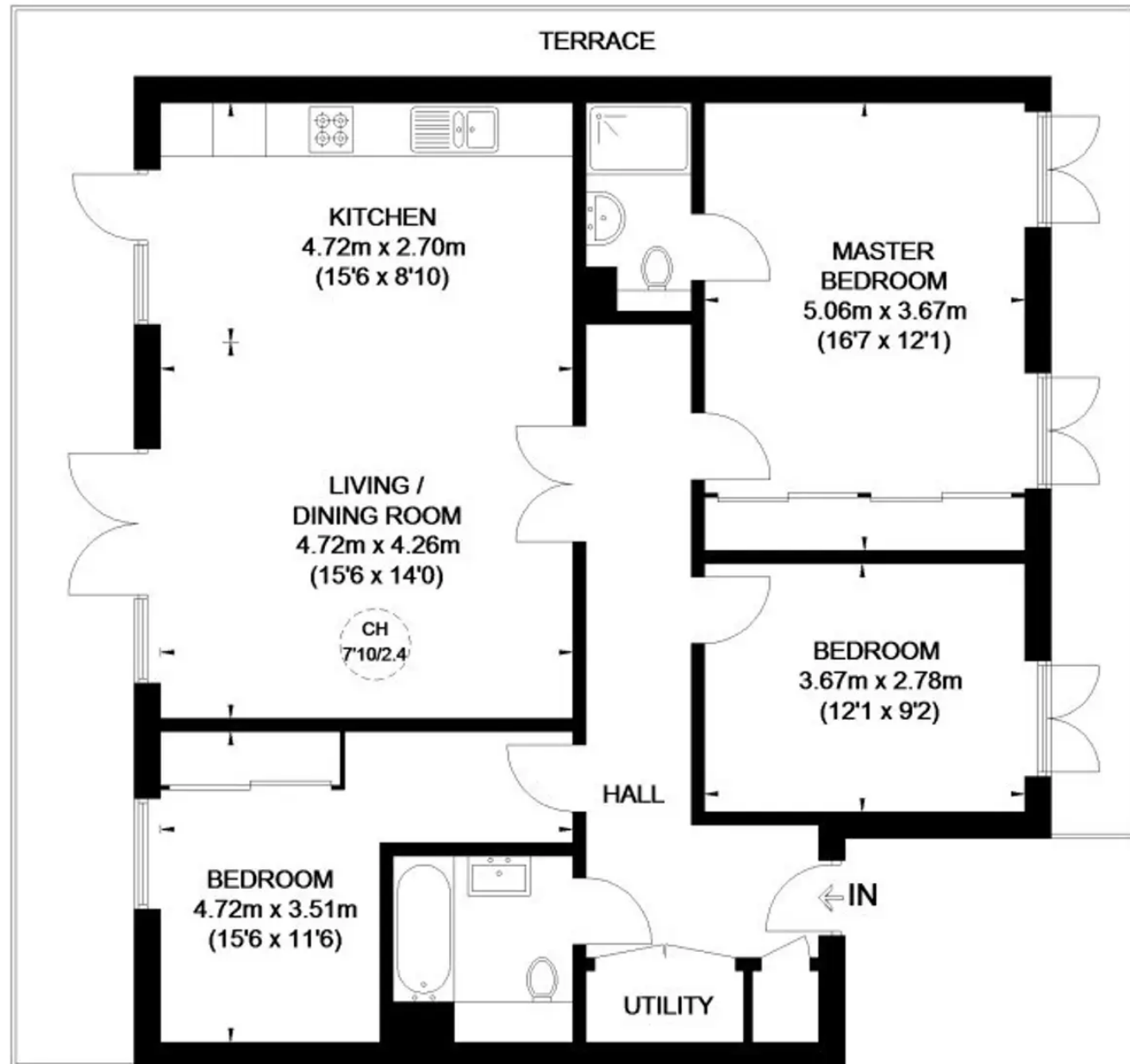
This thriving pocket of London offers a village-feel in the heart of the city; a place full of life, rich history, exciting shopping and a vibrant nightlife. Portobello Square is becoming one of the area's most desirable addresses with many boutiques, cafés and restaurants on its doorstep and excellent connections to the rest of London and beyond. The development is tucked away behind the fashionable Golborne Road and next to the world famous Portobello Road. Three tube stations are nearby and a good choice of buses swiftly link Bonchurch Road with the heart of London.

Council Tax band: F

Tenure: Leasehold 987 Years remaining







**FOURTH FLOOR**

1054 Sqft (97.92sq mtrs)

This plan is for layout guidance only. Not drawn to scale.  
 Unless stated, windows and door are  
 Whilst every care is taken in the pre-  
 please check all dimensions, always  
 before making any decisions related  
 and that someone with the Plan  
 seen or reviewed any building regulatio  
 in relation to works carried out to the property

SOMMERVILLE FLURY

SOMMERVILLE FLURY LIMITED

DEVONSHIRE HOUSE 1 MAYFAIR PLACE LONDON W1J 8AJ

T:- +44(0)20 3205 7260

[mark@sommervilleflury.com](mailto:mark@sommervilleflury.com)

[Belinda@sommervilleflury.com](mailto:Belinda@sommervilleflury.com)