



Courtfield Gardens, London SW5

£1,550,000

Leasehold 927 Years Remaining

SOMMERVILLE FLURY

Courtfield Gardens, London SW5

Description:

This elegant apartment is situated on the first floor of a beautifully maintained period house which is in a prime position of Courtfield Gardens, with south facing views of the landscaped, privately gated garden square and the beautiful Victorian church building.

This is a wonderful opportunity for a buyer to acquire a grand property in need of some modernisation, with an abundance of original features such as huge ceiling heights, cornicing, and floor to ceiling French doors leading onto a south facing balcony/terrace.

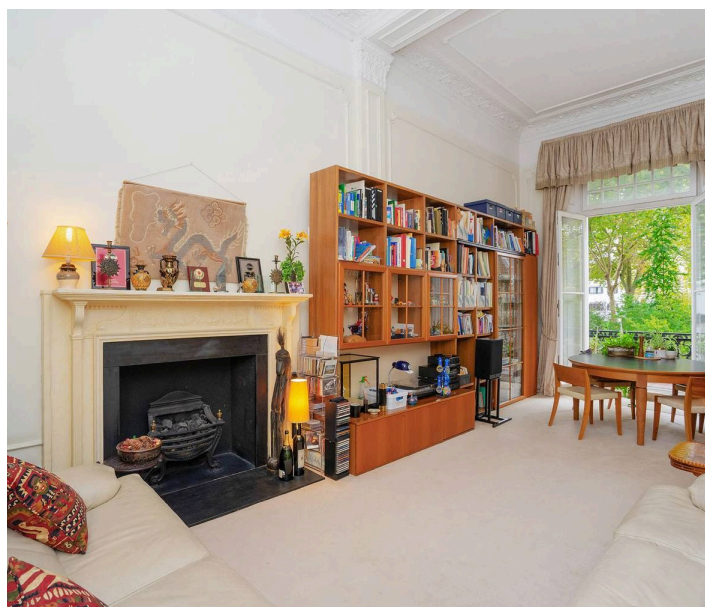
The apartment is currently laid out with two bedrooms, two bathrooms and a study on the mezzanine level.

The property is to be sold with a long lease with 927 years remaining.

Council Tax band: G

Tenure: Leasehold

SOMMERVILLE FLURY

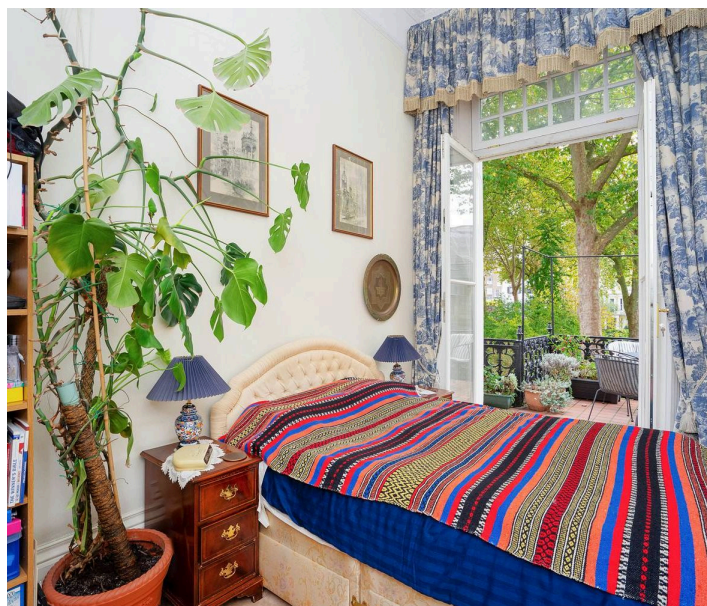


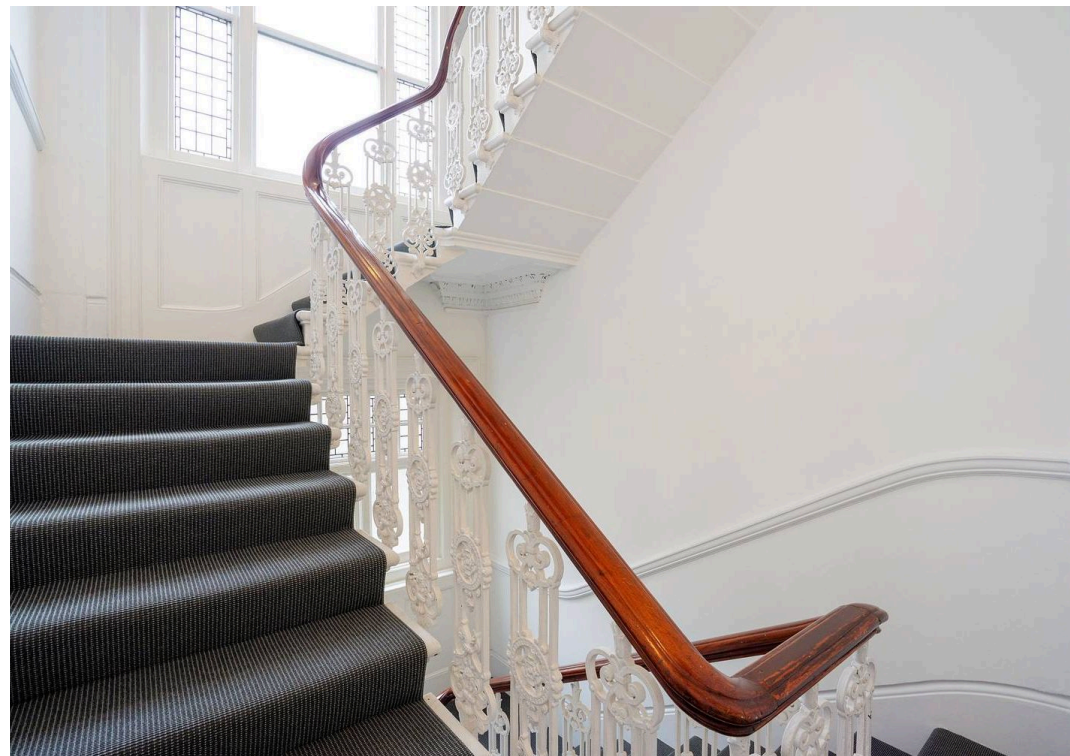
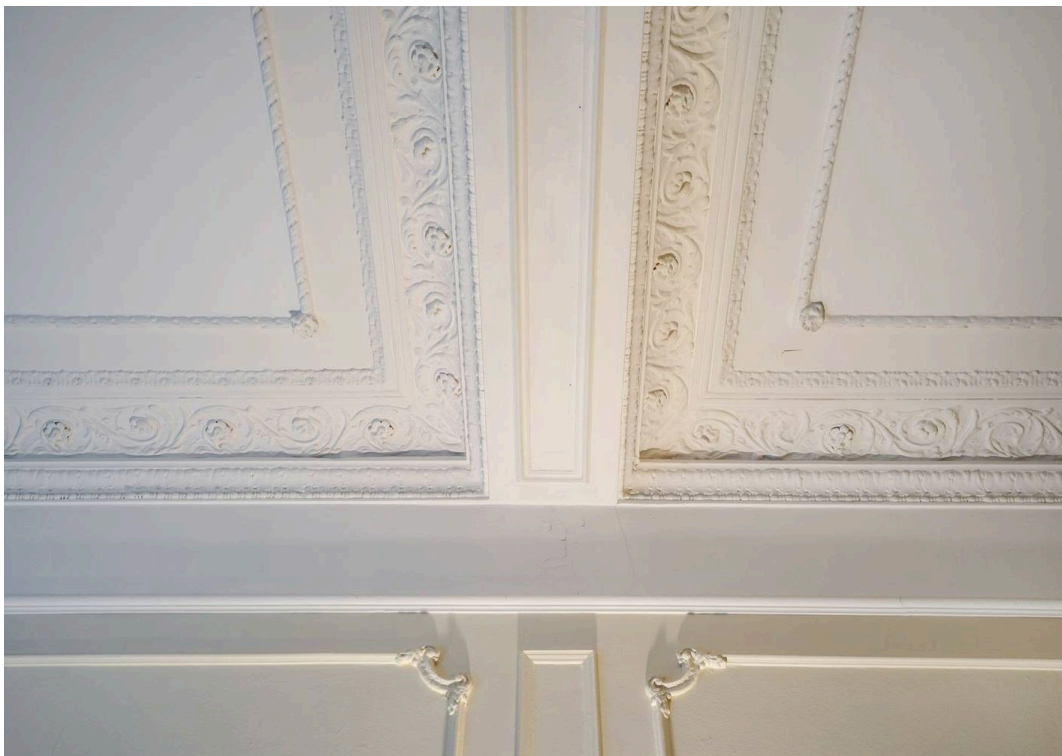
Courtfield Gardens, London SW5

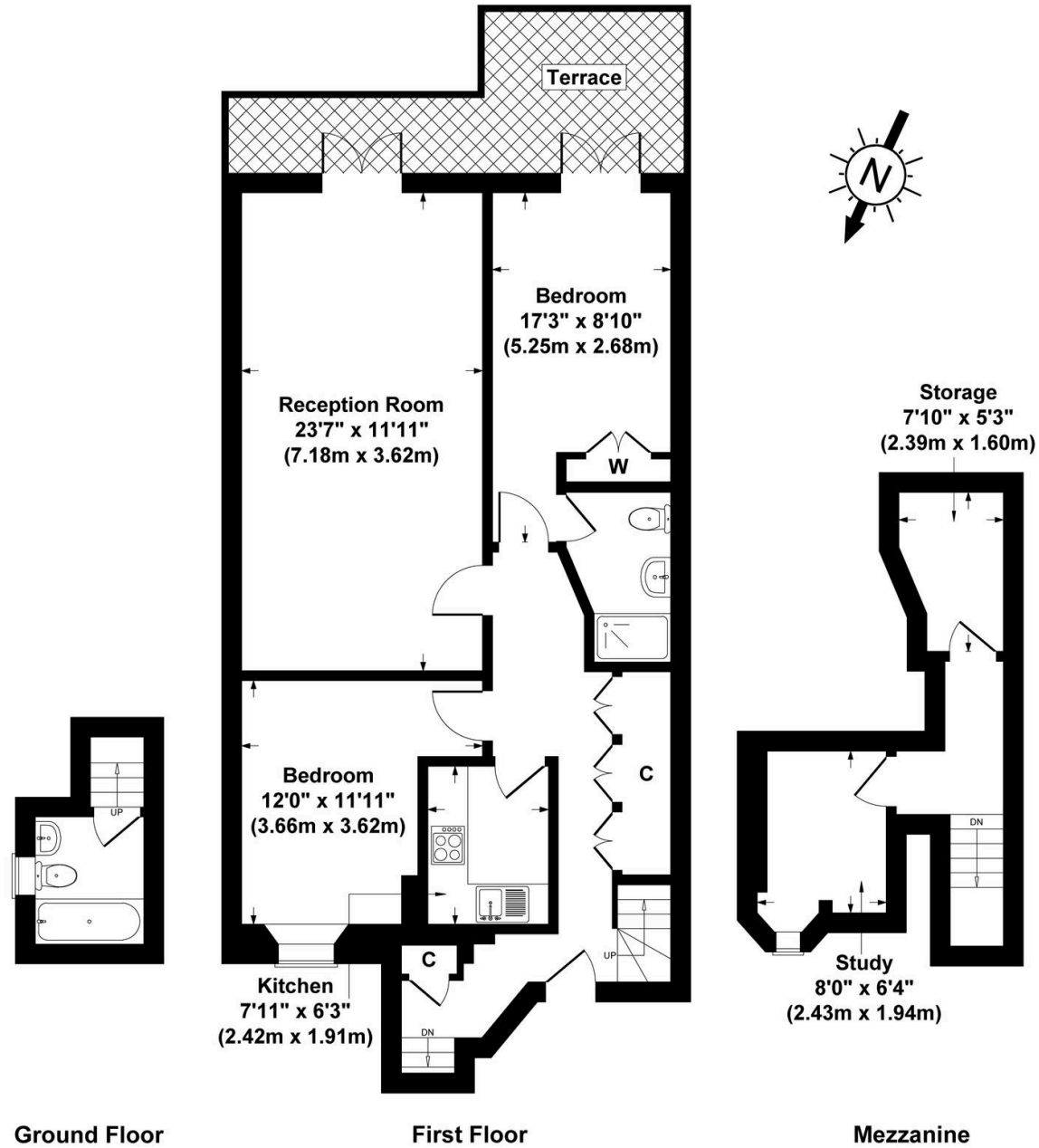
Location:

Courtfield Gardens is a sought-after 19th century residential garden square in the Royal Borough of Kensington and Chelsea. Its central location allows residents to enjoy the vibrant atmosphere and amenities of Gloucester Road, Earl's Court, and South Kensington, including a good selection of shops, bars, and restaurants.

Gloucester Road and Earl's Court underground stations, serviced by the District and Piccadilly Lines, are close by offering excellent transport connections. The property also enjoys proximity to the green open spaces of Kensington Gardens and Hyde Park, as well as convenient access to Knightsbridge, Kensington High Street and King's Road.







Ground Floor

First Floor

Mezzanine

Courtfield Gardens, London, SW5
Gross Internal Area 1001 sq ft / 93 sq metres
 Not to Scale. Produced by The Plan Portal 2024
For Illustrative Purposes Only.

SOMMERVILLE FLURY

+44(0)20 3479 5314

21 Ellis Street, Knightsbridge, London SW1X 9AL

info@sommervilleflury.com

www.sommervilleflury.com