



**Oxbridge Terrace, Palace Wharf,**  
London, W6

Guide Price **£3,150,000**

SOMMERVILLE FLURY



# Oxbridge Terrace, Palace Wharf

London, W6

An opportunity to purchase a the last remaining 3 bedroom modern south-west facing, new build townhouse offering panoramic views from three spacious balconies overlooking the River Thames. Oxbridge Terrace is set within Palace Wharf, a beautifully landscaped gated development alongside one of the most dramatic stretches of the River Thames.

Consisting of five newly built townhouses. The immediate area benefits from a selection of cafes, bars, and restaurants, with the popular Crabtree pub on your doorstep as well as the Michelin Star River Café a short walk away. The two exclusive private members' clubs, The Hurlingham Club and Queen's Club are also located close to Oxbridge Terrace.





# Oxbridge Terrace, Palace Wharf

London, W6

Location :-

Palace Wharf offers all the advantages of a cosmopolitan lifestyle in the heart of leafy South West London. Perfectly positioned between Fulham Broadway, Putney Bridge and Hammersmith Underground Stations, this townhouse benefits from quick and easy access to London's West End as well as Heathrow and Gatwick Airports.

Tenure: Freehold



SOMMERVILLE FLURY



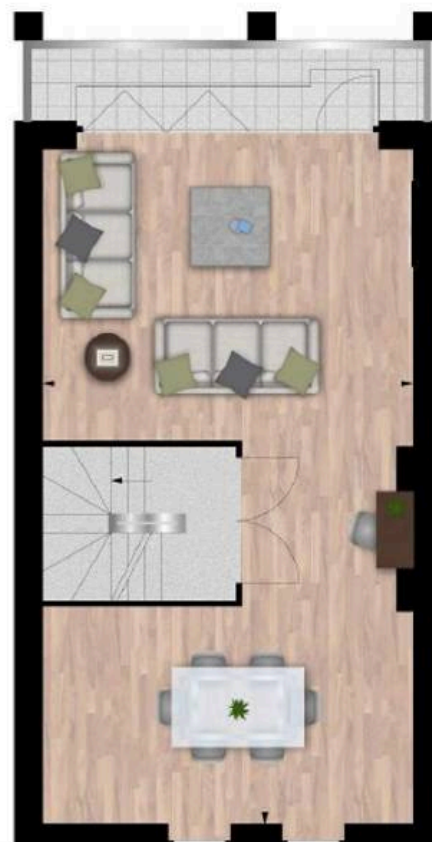




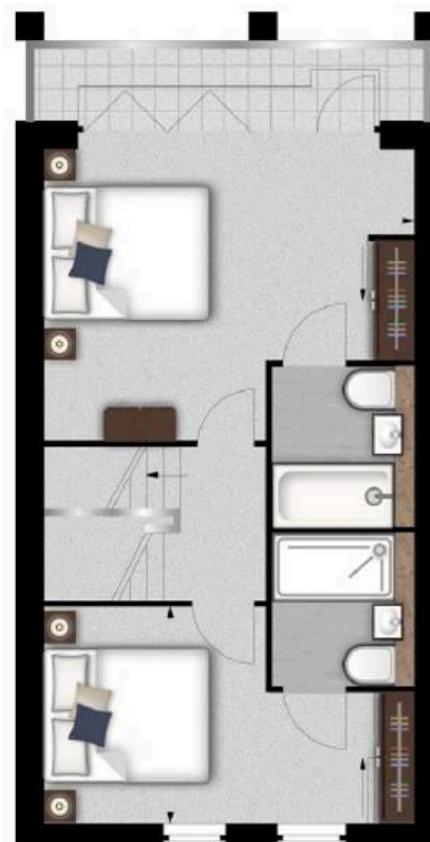




GROUND FLOOR



FIRST FLOOR



SECOND FLOOR



THIRD FLOOR

APPROX. GROSS INTERNAL AREA \*  
1,871 Ft<sup>2</sup> - 173.82 M<sup>2</sup>

Property Details:

**TOWNHOUSE 4**  
**PALACE WHARF**  
**RAINVILLE ROAD**  
**LONDON W6**

Surveyed and Drawn By:

**BKR**

Sunnyhill House  
3-7 Sunnyhill Road  
London, SW16 2UG

Tel: 0845 257 2023  
Fax: 0845 257 2024  
info@bkrfloorplans.co.uk  
www.bkrfloorplans.co.uk

© BKR 2017

Plans Drawn: 19.07.2017

## SOMMERVILLE FLURY

---

21 Ellis Street

London

SW1X 9AL

T:- +44(0)20 3479 5314

E:-[info@sommervilleflury.com](mailto:info@sommervilleflury.com)

Company no :- 14326860

VAT no :- 425 1715 17