



Kensington Gardens Square, London W2

£2,850,000

Leashold 995 years remaining

SOMMERVILLE FLURY

Kensington Gardens Square

London W2

Property Description:

An impressive three bedroom apartment with private entrance, grand double reception room, private courtyard and communal gardens access. Looking over a beautiful and tranquil private garden, this Grade II listed, white stucco fronted building has been meticulously refurbished to the highest specification. Many original features, such as staircase balustrades, ceiling roses, cornicing and fireplaces have been carefully restored or replicated where necessary, ensuring that the apartment maintains its period charm.

The property is equipped with the finest contemporary fixtures and fittings, including a bespoke Roundhouse kitchen with Miele appliances, luxuriously designed bathrooms, underfloor heating, oak herringbone floors and RAKO mood lighting; all of which guarantee unsurpassable comfort.

The apartment also benefits from its own terrace and access to the private gardens which are directly opposite.



Kensington Gardens Square

London, W2

Location:

Kensington Gardens Square is ideally positioned, close to the popular shopping destinations of Westbourne Grove and Ledbury Road. Nestled between Hyde Park and Notting Hill, the property will undoubtedly benefit from the regeneration around Whiteleys, which will make Queensway and Bayswater one of the most desirable areas in Prime Central London.

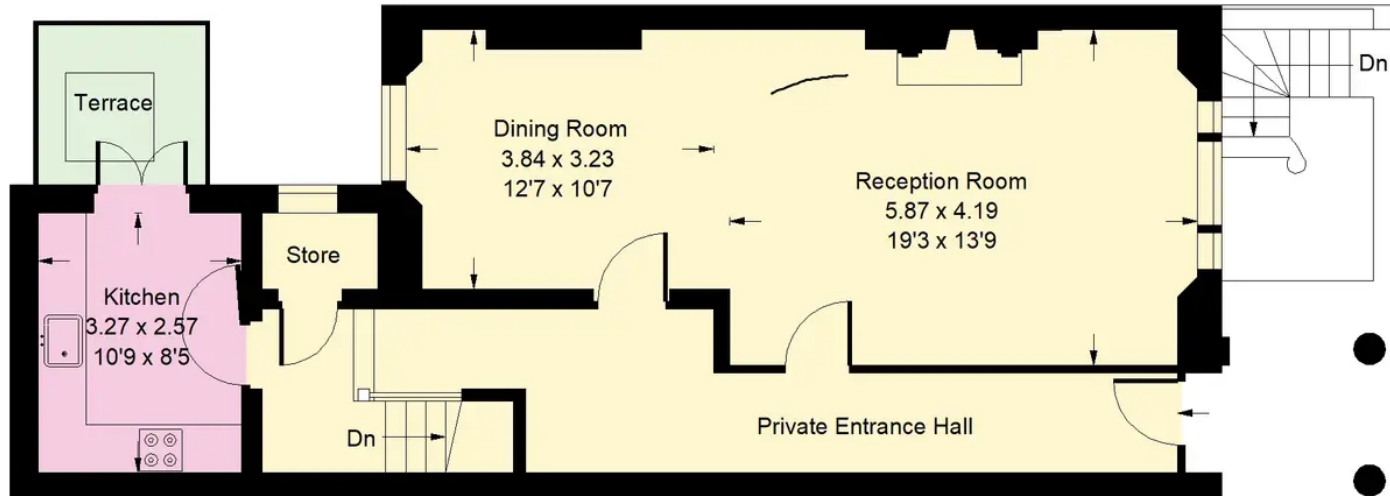
It is served by excellent transport links and is within close proximity of Notting Hill (Central, District & Circle Lines), Bayswater (District & Circle) and Queensway (Central Line) tube stations.

Local Authority: City of Westminster

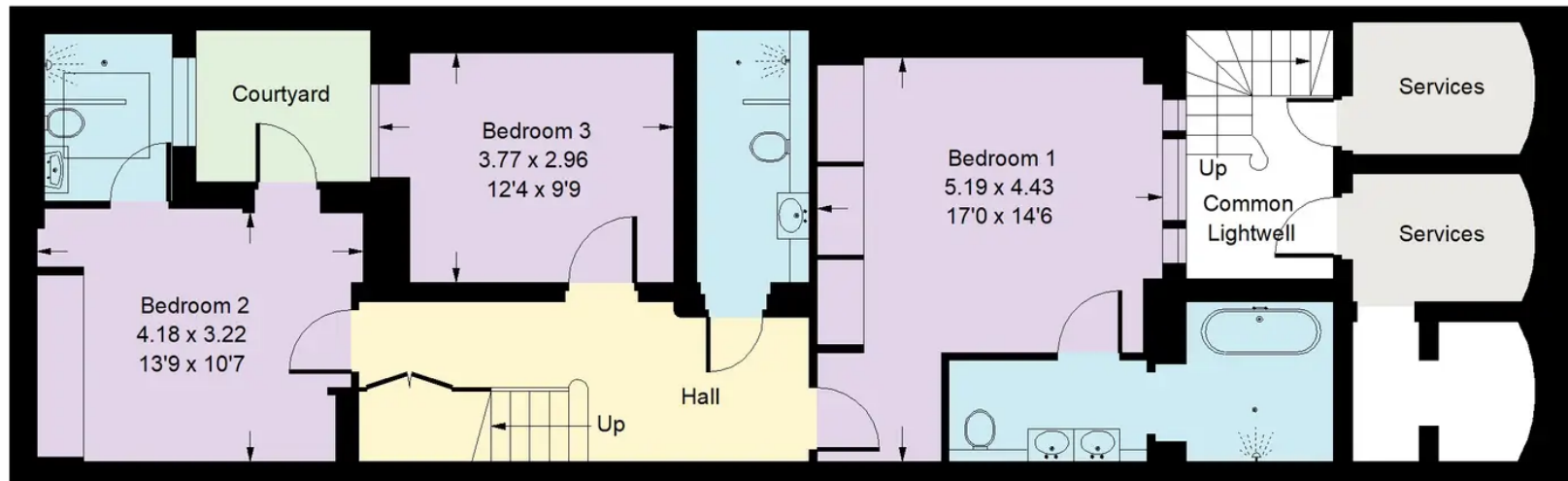


Kensington Gardens Square, W2

Approx. Gross Internal Area
152 sq m / 1636 sq ft



Ground Floor



Lower Ground Floor

SOMMERVILLE FLURY

21 Ellis Street, Knightsbridge, London SW1X 9AL

+44(0)20 3479 5314

info@sommervilleflury.com

<http://www.sommervilleflury.com>